

All rights reserved by **CNHi**.

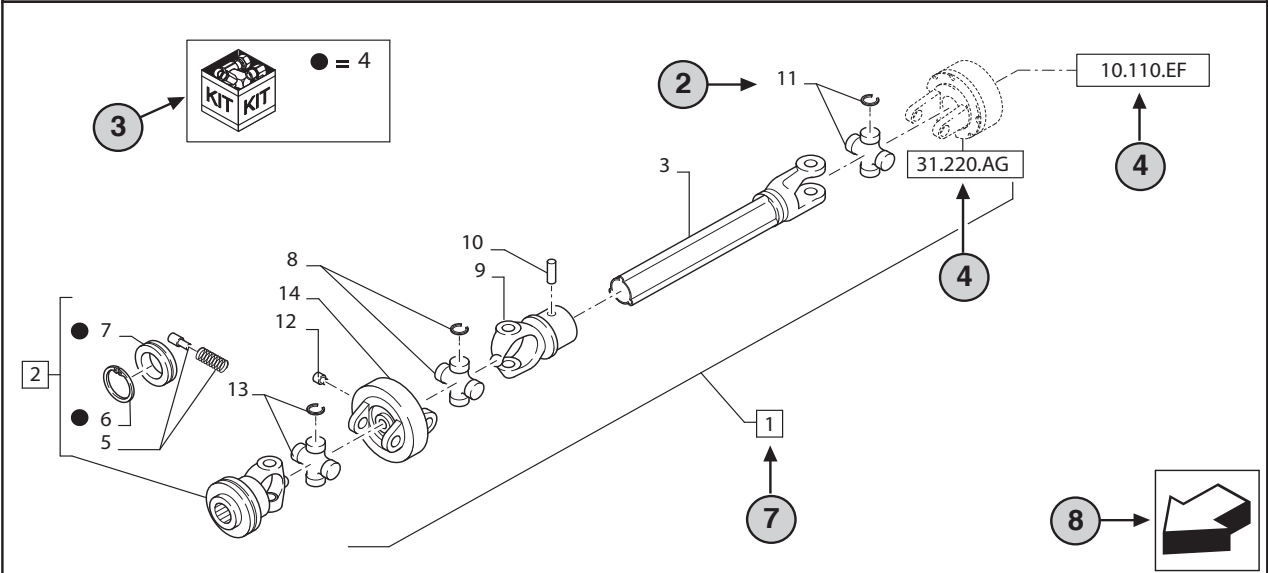
The information contained in this catalogue is intended to be of a general nature only. **CNHi** may at any time and from time to time, for technical or other necessary reasons, modify any of the details or specifications of the product described in this catalogue.

To be sure of getting accurate, detailed and up-to-date information, an intending buyer should consult his nearest **CNHi** dealer or distributor.

Single item numeration method used in this catalogue may not be used without written consent from **CNHi**.

| | | | |
|------------------|----|----|---------|
| 31.220.AD | 01 | p1 | 10/2014 |
|------------------|----|----|---------|

VAR - 123782, 789101,987654 - PTO - D650



STANDARD ← 6

| | | | | | | |
|----|---|----|------------------|----|----|---------|
| 23 | 9 | 10 | 31.220.AD | 01 | p1 | 10/2014 |
|----|---|----|------------------|----|----|---------|

| | | | | |
|--|----|----|----|----|
| VAR - 123782, 789101,987654 - PTO - D650 | 11 | 12 | 13 | 14 |
|--|----|----|----|----|

| REF | FN | PART NUMBER | YR/SN | QTY | DESCRIPTION |
|------------------------|----|-------------|-------|-----|--|
| 1 | 1 | 86529340 | 20 | 1 | SHAFT PTO, Incl 2 - 11 |
| 2 | 15 | 84014007 | | 1 | YOKE, Incl 4 - 7 ← 7 |
| 3 | 16 | NSS | | 1 | NOT SERVICED SEPARATELY, SHAFT, 350mm, Incl in 1 |
| 4 | | 84004292 | | 1 | KIT, Seal Kit, Incl 6, 7 ← 17 |
| 4 | | {84058743} | | 1 | KIT, Seal Kit, Incl 6, 7 |
| 2 | 18 | | | 21 | |
| 19 | | | | 22 | |
| 1 = FOR ITALY ONLY ← 5 | | | | | |

MODELS ← 1

- 1 Model Number and Model Description
- 2 Reference - Figure call-out of the part number.
- 3 Parts supplied in repair kits per symbol reference.
- 4

31.220.AD

 Part illustrated on the **Page** or in the **Figure** indicated, or calls for **Variations** or **Details**. Indicates components shown in detail elsewhere in the catalogue under the figure number shown.
- 5 Footnote references
- 6 Figure notes
- 7

1

2


 Includes item(s) (See Description within partlist).
- 8 Orientation. (Arrow indicates front of the machine). 
- 9 Figure description.
- 10 General information of the figure.
- 11 Figure title number that aligns with the SRT. Standard Repair Time.
- 12 **Sequence** code within the assembly.
- 13 Page number within the sequence code.
- 14 **Date** of printing or updating of page (month-year).
- 15 **Note** - Relating to the Part Number. There is a key to symbols and abbreviations at the bottom of the text page.
- 16 Non-serviced parts.
- 17 Further description of the part to help confirm identification.
- 18 Not available as service part.
- 19 Part Number.
- 20 To be defined.
- 21 Total **Quantity** of the Part referred to in the page.
The quantity can be replaced by the following indications:
AR = quantity as requested.
- 22 Part **Description**.
- 23 Variant Codes

TABLE OF CONTENTS

| | | |
|-----------|----|--|
| 05.100.03 | | FILTER & CAPACITIES, TC29DA |
| 05.100.03 | 01 | FILTER & CAPACITIES, TC33DA |
| 20.01 | | INITIAL STOCKING LIST (ISL) |
| 01.01 | | CYLINDER BLOCK |
| 01.02 | | CAMSHAFT |
| 01.03 | | CYLINDER HEAD |
| 01.04 | | CRANKSHAFT & PISTONS |
| 01.05 | | HEAD COVER |
| 01.06 | | ROCKER ARM |
| 01.06.01 | | ROCKER ARM |
| 01.07 | | TIMING GEAR CASE |
| 01.08 | | OIL PUMP, WATER PUMP, ALTERNATOR |
| 01.09 | | ALTERNATOR |
| 01.10 | | STARTING MOTOR |
| 01.11 | | INJECTION PUMP & LINES |
| 01.12 | | INJECTION PUMP |
| 01.13 | | FUEL INJECTOR |
| 02.01 | | RADIATOR |
| 02.01.01 | | RADIATOR SCREEN KIT - 87317547 |
| 02.02 | | FUEL TANK & RELATED PARTS |
| 02.03 | | OIL COOLER, HST |
| 02.03.01 | | OIL COOLER, HST - ON & ASN G105215 |
| 02.04 | | AIR CLEANER |
| 02.05 | | MUFFLER |
| 02.06 | | THROTTLE CONTROLS - HAND HST |
| 02.07 | | THROTTLE CONTROLS - FOOT 9 X 3 |
| 03.01 | | DOUBLE CLUTCH & CLUTCH CASE, W9 X 3 |
| 03.02 | | DOUBLE CLUTCH W/9 X 3 |
| 03.03 | | CLUTCH & CLUTCH CASE, W/HST |
| 03.04 | | FRONT TRANSMISSION CASE & SHIFTER, W/9 X 3 |
| 03.05 | | FRONT TRANSMISSION CASE & SHIFTER, W/HST |
| 03.06 | | FRONT TRANSMISSION DUAL CLUTCH IN PUT SHAFT, W/9 X 3 |
| 03.07 | | FRONT TRANSMISSION GEARS, W/HST |
| 03.08 | | FRONT TRANSMISSION GEARS W/9 X 3 & W/FWD |

TABLE OF CONTENTS

| | |
|----------|---|
| 03.09 | FRONT TRANSMISSION GEARS W/9 X 3 PTO SHAFT |
| 03.10 | REAR TRANSMISSION CASE & SHIFTER 9 X 3 & HST |
| 03.11 | REAR TRANSMISSION GEARS, W/9 X 3 |
| 03.12 | REAR TRANSMISSION GEARS, W/HST |
| 03.13 | AERATION PARTS |
| 03.14 | PTO GEARS |
| 03.15 | MID PTO |
| 03.16 | HST |
| 03.17 | HST CONTROLS & CRUISE CONTROL |
| 03.18 | CONTROL LEVERS, TRANSMISSION RANGE, REAR PTO, MID PTO & FWD |
| 03.19 | COLUMN SHIFT, W/9 X 3 |
| 03.20 | PEDALS & BRAKE LOCK (HST & 9 X 3) |
| 04.01 | STEERING COLUMN, TILT |
| 04.01.01 | STEERING COLUMN BRACKET |
| 04.02 | STEERING LINKAGE |
| 04.03 | FRONT AXLE, SUPER STEER OR WITH SENSITRACK |
| 04.04 | FRONT DRIVE SHAFT,SENSITRACK CLUTCH, POWER STEERING CYLINDER W/ SUPER STEER |
| 04.05 | FRONT DIFFERENTIAL GEARS, W/FWD |
| 04.06 | FINAL REDUCTION GEARS, W/FWD |
| 04.07 | FRONT AXLE W/FWD |
| 04.08 | POWER STEERING PUMP |
| 04.08.01 | HYDRAULIC PUMP ASSY. & POWER STEERING PUMP BREAKDOWN |
| 04.08.02 | POWER STEERING CONTROL MOTOR & PIPING |
| 04.08.03 | POWER STEERING CONTROL MOTOR |
| 04.09 | POWER STEERING CYLINDER, W/FWD |
| 04.10 | POWER STEERING CYLINDER, W/SUPER STEER |
| 04.11 | PARKING BRAKE, HST |
| 04.12 | PARKING BRAKE, 9 X 3 |
| 05.01 | DIFFERENTIAL & DIFFERENTIAL LOCK LINKAGE |
| 05.02 | BRAKE & WHEEL SHAFT CASE |
| 06.01 | BATTERY |
| 06.02 | ELECTRICAL COMPONENTS |
| 06.03 | RELAY, DIODE & FUSE LOCATIONS, RIGHT HAND SIDE |
| 06.04 | RELAY & DIODE LOCATIONS, LEFT HAND SIDE |

TABLE OF CONTENTS

| | |
|----------|---|
| 06.06 | SWITCHES |
| 06.07 | INSTRUMENT PANEL |
| 06.07.01 | DASHBOARD & REAR HOOD |
| 06.08 | REAR LIGHTING, RH & LH |
| 06.09 | HOOD HEADLAMP & HARDWARE |
| 06.10 | WORKLIGHTS - FENDER MOUNTED |
| 06.11 | WORKLIGHT KIT - ROPS MOUNTED |
| 07.01 | HYDRAULIC LIFT COVER & ARMS |
| 07.02 | LIFT COVER CYLINDER HEAD |
| 07.03 | CONTROL VALVE, QUADRANT & LINKAGE L/DRAFT CONTROL |
| 07.04 | SINGLE SPOOL REAR, REMOTE CONTROL VALVE KIT, #1 - 718348056 |
| 07.05 | SINGLE SPOOL REAR, REMOTE CONTROL VALVE KIT, #2 - 718347016 |
| 07.06 | HYDRAULIC PUMP & PIPING |
| 07.06.01 | HYDRAULIC PUMP & POWER STEERING PUMP |
| 07.07 | HYDRAULIC PIPING W/HST |
| 07.08 | HPL CONTROL VALVE ASSEMBLY - SBA340016350 |
| 07.09 | HPL CONTROLS |
| 07.10 | MANIFOLD DIVERTER BLOCK - SBA340015500 |
| 07.10.01 | MANIFOLD DIVERTER BLOCK - SBA340016660 |
| 07.11 | 2-SPOOL REMOTE CONTROL VALVE & PIPING KIT - 710440076 |
| 07.12 | TWO-SPOOL REMOTE CONTROL VALVE |
| 08.01 | FENDERS |
| 08.02 | HOOD |
| 08.02.01 | HOOD - USED ON & ASN G105891 |
| 08.02.02 | LOWER PLASTIC TRIM |
| 08.02.03 | HOOD HINGE & FIREWALL |
| 08.02.04 | LH REAR VIEW MIRROR KIT - 718877016 |
| 08.03 | GRILLE GUARD KIT, STANDARD FRONT AXLE - 719849056 |
| 08.03.01 | GRILLE GUARD KIT W/SUPERSTEER AXLE - 719849096 |
| 08.04 | DECALS, OPERATING |
| 08.05 | DECALS - IDENTIFICATION |
| 08.06 | DECALS, WARNING |
| 08.07 | KIT, FRENCH DECAL - 87573708 |
| 09.01 | DELUXE THREE-POINT HITCH |

TABLE OF CONTENTS

| | |
|----------|---------------------------------------|
| 09.02 | DELUXE DRAWBAR ASSEMBLY |
| 09.03 | PTO SHIELD |
| 10.02 | STEP PLATE |
| 10.02.01 | FLOOR MATS |
| 10.02.02 | KITS, RIGHT SIDE & LEFT SIDE STEP |
| 10.03 | DELUXE SEAT - 87312892 |
| 10.03.01 | DELUXE SEAT - 87312892 |
| 10.03.02 | DELUXE SEAT - 87312892 |
| 10.05 | TOOL BOX KIT & SMV |
| 10.06 | FOLDABLE ROLL BAR & RELATED PARTS |
| 11.01 | FRONT & REAR WHEELS |
| 11.02 | FRONT END WEIGHTS |
| 11.03 | REAR WHEEL WEIGHTS, 105 LBS., AG ONLY |
| 11.04 | REAR WHEEL WEIGHTS, 75 LBS., R4 FWD |
| 11.05 | FRONT WEIGHT CARRIER - 718233016 |

SECTION INDEX

GENERAL

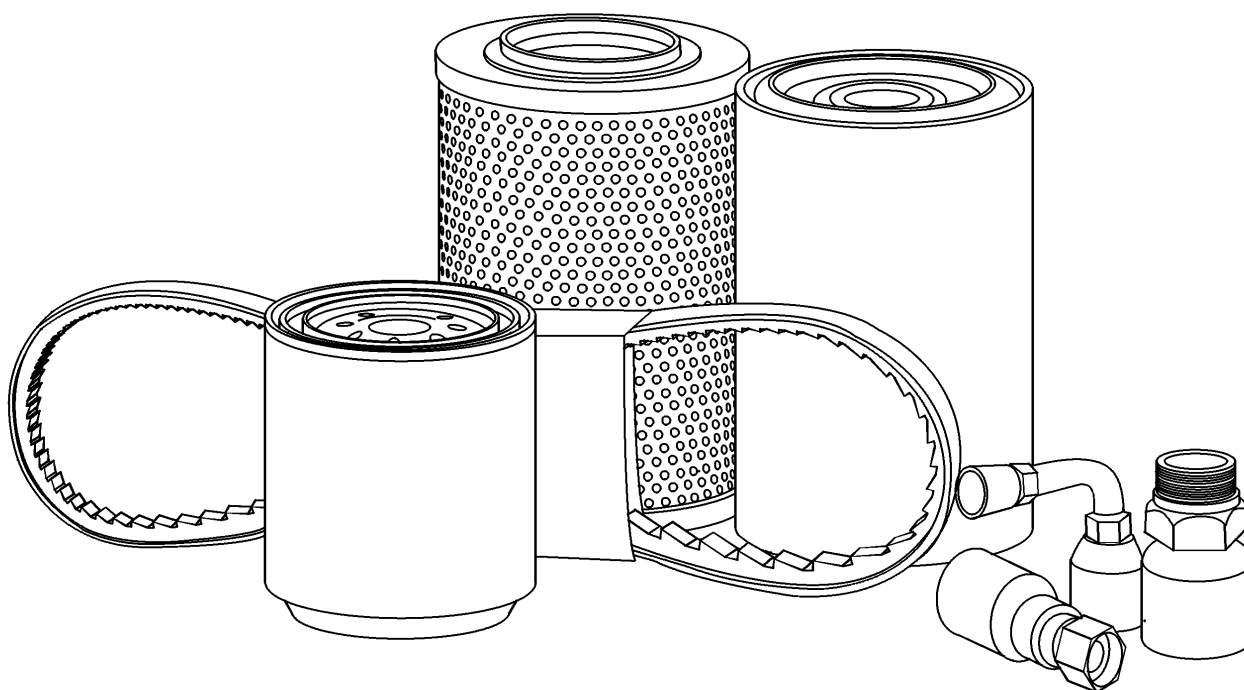
| | | |
|-----------|----|-----------------------------|
| 05.100.03 | | FILTER & CAPACITIES, TC29DA |
| 05.100.03 | 01 | FILTER & CAPACITIES, TC33DA |
| 20.01 | | INITIAL STOCKING LIST (ISL) |

05.100.03

p1

8/2018

FILTER & CAPACITIES, TC29DA



FILTER & CAPACITIES, TC29DA

| REF | FN | PART NUMBER | YR/SN | QTY DESCRIPTION |
|-----|----|-----------------|-------|---|
| * | | CNH XHD COOLANT | | ANTIFREEZE Coolant, 1.06-Gal (4.L) |
| 1 | | 84475542 | | 1 ENGINE OIL FILTER |
| * | | M-GOLD SAE10W30 | | OIL Engine Crankcase, W/Filter, 4.2-QT (4L) |
| 2 | | 87682998 | | 1 AIR FILTER |
| 3 | | 87300180 | | 1 AIR FILTER |
| 4 | | 87300043 | | 1 HYDRAULIC OIL FILTER Spin On |
| 5 | | SBA340501030 | | 1 FILTER Hydrostat |
| * | | MULTI G 134 | | OIL Hydraulic, Rear Axle & Transmission, Gear, 8.6-Gal (32.6L) |
| * | | MULTI G 134 | | OIL Hydraulic, Rear Axle & Transmission, HST, 8.8-Gal (33.3L) |
| 6 | | SBA360720130 | | 1 ELEMENT Fuel, Cartridge |
| * | | MULTI G 134 | | OIL Front Axle, Hubs and Differential Each-FWD Only, Front Axle Hub, 0.85-QT (0.8L) |
| * | | MULTI G 134 | | OIL Front Axle, Hubs and Differential Each-FWD Only, Differential Case, 1.5-QT (1.4L) |
| * | | MULTI G 134 | | OIL Power Steering, 1.7-QT (1.6L) |

TC29DA-3 CYL COMPACT TRACTOR

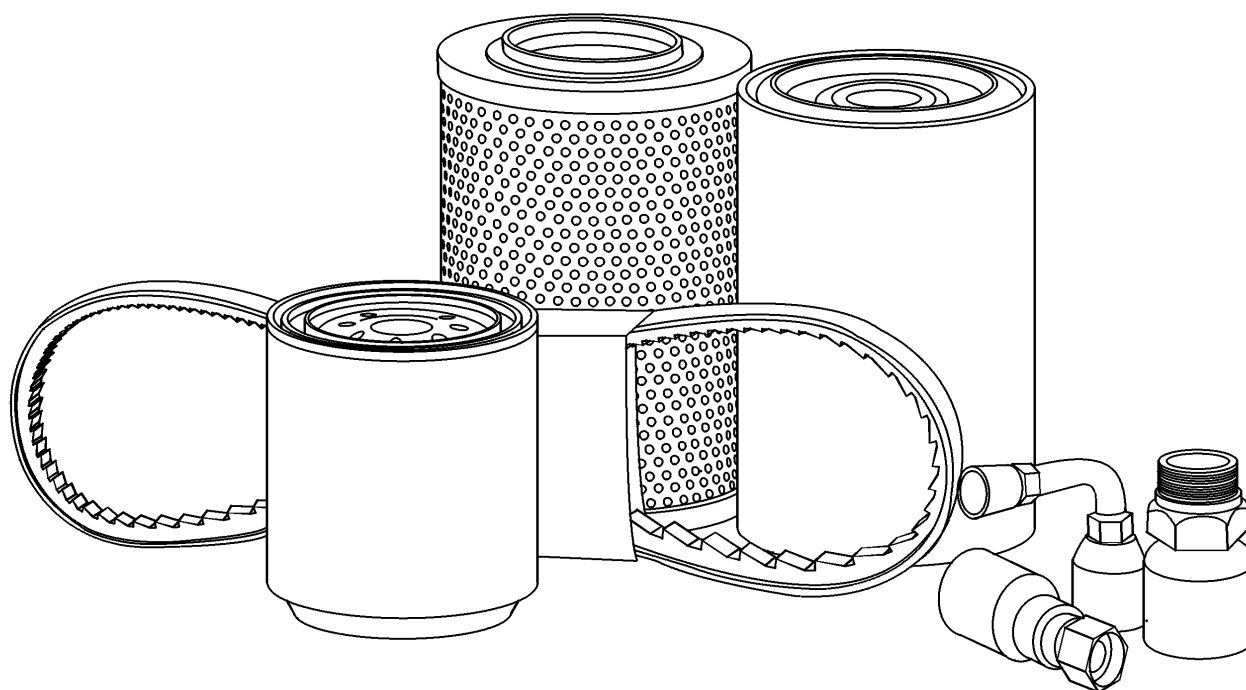
05.100.03

01

p1

8/2018

FILTER & CAPACITIES, TC33DA

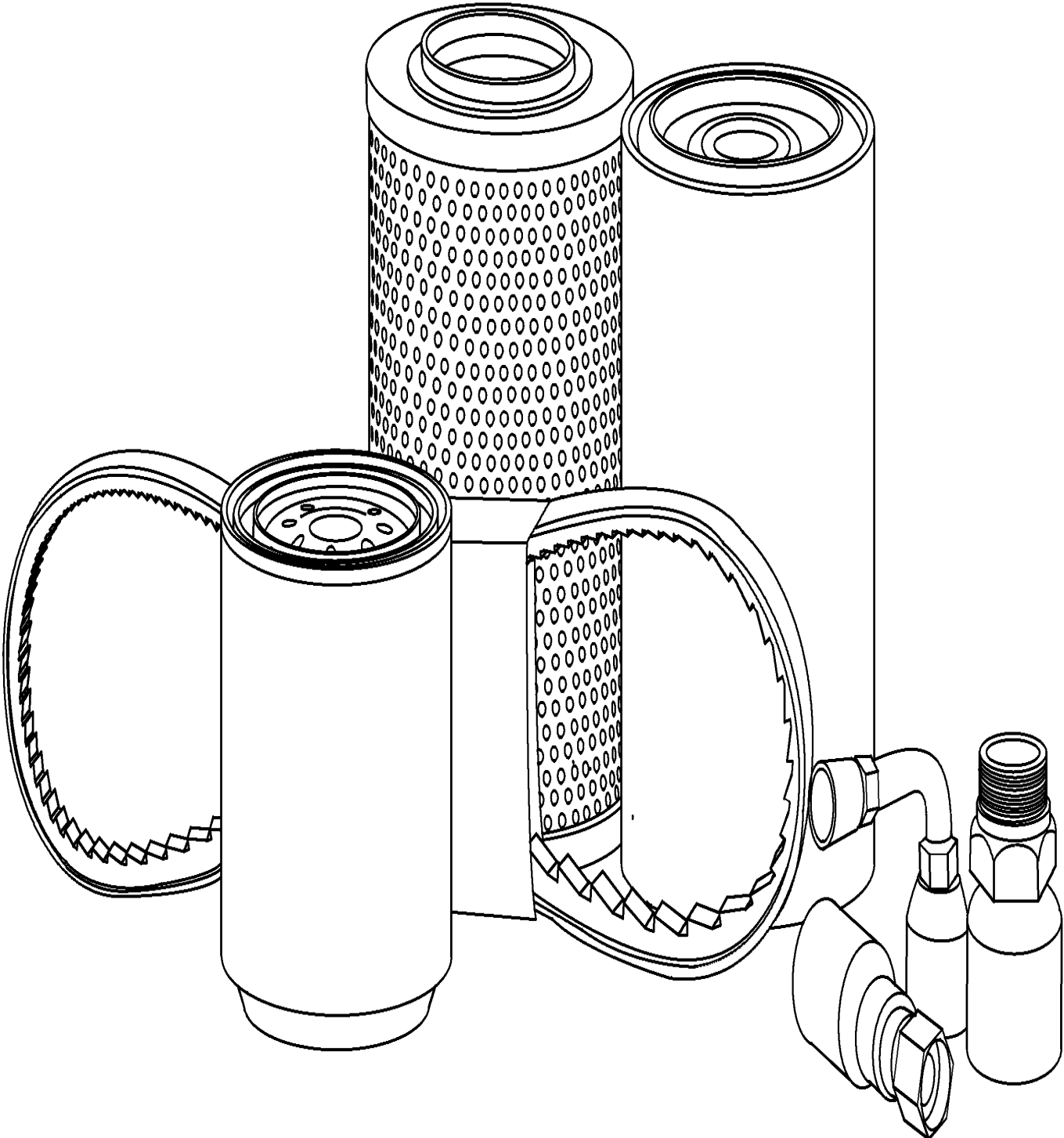


FILTER & CAPACITIES, TC33DA

| REF | FN | PART NUMBER | YR/SN | QTY DESCRIPTION |
|-----|----|-----------------|-------|---|
| * | | CNH XHD COOLANT | | ANTIFREEZE Coolant, 1.06-Gal (4.0L) |
| 1 | | 84475542 | | 1 ENGINE OIL FILTER |
| * | | M-GOLD SAE10W30 | | OIL Engine Crankcase, W/Filter, 4.2-QT (4L) |
| 2 | | 87682998 | | 1 AIR FILTER |
| 3 | | 87300180 | | 1 AIR FILTER |
| 4 | | 87300043 | | 1 HYDRAULIC OIL FILTER Spin On |
| 5 | | SBA340501030 | | 1 FILTER Hydrostat |
| * | | MULTI G 134 | | OIL Hydraulic, Rear Axle & Transmission, Gear, 8.6-Gal (32.6L) |
| * | | MULTI G 134 | | OIL Hydraulic, Rear Axle & Transmission, HST, 8.8-Gal (33.3L) |
| 6 | | SBA360720130 | | 1 ELEMENT Fuel, Cartridge |
| * | | MULTI G 134 | | OIL Front Axle, Hubs and Differential Each-FWD Only, Front Axle, 0.85-QT (0.8L) |
| * | | MULTI G 134 | | OIL Front Axle, Hubs and Differential Each-FWD Only, Differential Case, 1.5-QT (1.4L) |
| * | | MULTI G 134 | | OIL Power Steering, 1.7-QT (1.6L) |

TC33DA-3 CYL COMPACT TRACTOR

INITIAL STOCKING LIST (ISL)



INITIAL STOCKING LIST (ISL)

| REF FN | PART NUMBER | YR/SN | QTY DESCRIPTION |
|--------|--------------|-------|---|
| | { } | | LIST A - PARTS REQUIRED FOR PREVENTATIVE MAINTENANCE |
| | 87415600 | | 1 ENGINE OIL FILTER |
| | 87300178 | | 1 AIR FILTER Outer |
| | 87300180 | | 1 AIR FILTER Inner |
| | 87300039 | | 1 FUEL FILTER Element |
| | 87300043 | | 1 HYDRAULIC OIL FILTER |
| | SBA340501030 | | 1 FILTER HST, W/Internal Bypass |
| | 86517954 | | 1 V-BELT 0.50" W x 37.54" L Fan |
| | { } | | LIST B - PARTS REQUIRED FOR PREVENTATIVE MAINTENANCE AND BASIC REPAIR |
| | 86537972 | | 1 RELAY All Circuits |
| | 86402702 | | 1 PARK BRAKE SWITCH Safety |
| | 86530877 | | 1 SWITCH Brake Cruise Control Rel |
| | 86405634 | | 1 IGNITION SWITCH |
| | 86531140 | | 1 SWITCH Safety Mid PTO |
| | SBA385200730 | | 1 SWITCH Rear PTO Safety |
| | SBA312070110 | | 1 CABLE 912mm L Hand Throttle |
| | SBA312070230 | | 1 CABLE Foot Throttle |
| | 86549878 | | 1 CABLE Control, Parking Brake, Clevis is Part of Cable NSS |
| | 86532881 | | 1 CAP |
| | 86530802 | | 1 RADIATOR CAP |
| | 9847313 | | 2 BULB #894, 12V, 37.5W Headlamp |
| | 139119A1 | | 2 BULB #886, 12V, 50W |
| | 137823A1 | | 2 BULB #9004, 65W/50W |
| | 86401271 | | 1 IGNITION KEY |
| | 86530740 | | 1 SPRING Brake, LH |
| | 86543804 | | 1 SPRING Brake, RH |
| | 86403092 | | 1 FLASHER UNIT |

TC29DA-3 CYL COMPACT TRACTOR TC33DA-3 CYL COMPACT TRACTOR

SECTION INDEX

ENGINE

| | |
|----------|----------------------------------|
| 01.01 | CYLINDER BLOCK |
| 01.02 | CAMSHAFT |
| 01.03 | CYLINDER HEAD |
| 01.04 | CRANKSHAFT & PISTONS |
| 01.05 | HEAD COVER |
| 01.06 | ROCKER ARM |
| 01.06.01 | ROCKER ARM |
| 01.07 | TIMING GEAR CASE |
| 01.08 | OIL PUMP, WATER PUMP, ALTERNATOR |
| 01.09 | ALTERNATOR |
| 01.10 | STARTING MOTOR |
| 01.11 | INJECTION PUMP & LINES |
| 01.12 | INJECTION PUMP |
| 01.13 | FUEL INJECTOR |

Exploded view diagram of a New Holland 1000 Series engine assembly. The diagram shows the engine block (1) with various components numbered 1 through 43. The components include:

- 1: Engine block
- 1A: Cylinder head
- 2: Water pump
- 3: Alternator
- 4: Timing belt
- 5: Timing belt guide
- 6: Timing belt tensioner
- 7: Timing belt guide
- 8: Timing belt guide
- 9: Timing belt guide
- 10: Timing belt guide
- 11: Timing belt guide
- 12: Timing belt guide
- 13: Timing belt guide
- 14: Timing belt guide
- 15: Timing belt guide
- 16: Timing belt guide
- 17: Timing belt guide
- 18: Timing belt guide
- 19: Timing belt guide
- 20: Timing belt guide
- 21: Timing belt guide
- 22: Timing belt guide
- 23: Timing belt guide
- 24: Timing belt guide
- 25: Timing belt guide
- 26: Timing belt guide
- 27: Timing belt guide
- 28: Timing belt guide
- 29: Timing belt guide
- 30: Timing belt guide
- 31: Timing belt guide
- 32: Timing belt guide
- 33: Timing belt guide
- 34: Timing belt guide
- 35: Timing belt guide
- 36: Timing belt guide
- 37: Timing belt guide
- 38: Timing belt guide
- 39: Timing belt guide
- 40: Timing belt guide
- 41: Timing belt guide
- 42: Timing belt guide
- 43: Timing belt guide

A box labeled "KIT" with the New Holland logo is shown at the bottom right, indicating that the kit includes all the parts shown in the diagram.

Flywheel Damper Disk Starter

**Thanks very much for your reading,
Want to get more information,
Please click here, Then get the complete
manual**

JustClickHere 

NOTE:

**If there is no response to click on the link above,
please download the PDF document first, and then
click on it.**

**Have any questions please write to me:
admin@servicemanualperfect.com**